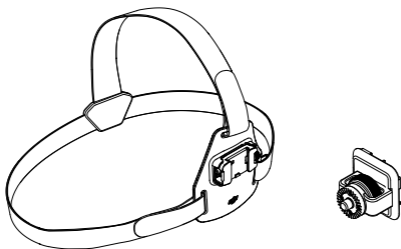


# OSMO Chest Strap Mount

User Guide V1.0

2016.08



## **Disclaimer and Warning**

Congratulations on purchasing your new DJI™ product. The information in this document affects your safety and your legal rights and responsibilities. Read this entire document carefully to ensure proper configuration before use. Failure to read and follow instructions and warnings in this document may result in serious injury to yourself or others, damage to your DJI product, or damage to other objects in the vicinity. This document and all other collateral documents are subject to change at the sole discretion of DJI. For up-to-date product information, visit <http://www.dji.com> and click on the product page for this product.

By using this product, you hereby signify that you have read this disclaimer and warning carefully and that you understand and agree to abide by the terms and conditions herein. You agree that you are solely responsible for your own conduct while using this product, and for any consequences thereof. You agree to use this product only for purposes that are proper and in accordance with all applicable laws, rules, and regulations, and all terms, precautions, practices, policies and guidelines DJI has made and may make available.

DJI accepts no liability for damage, injury or any legal responsibility incurred directly or indirectly from the use of this product. The user shall observe safe and lawful practices including, but not limited to, those set forth in this document.

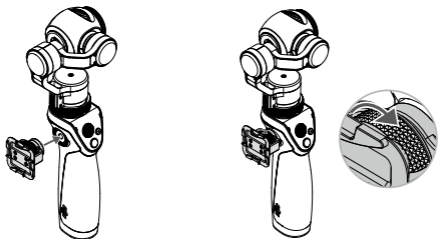
DJI is a trademark of SZ DJI TECHNOLOGY CO., LTD. (abbreviated as "DJI") and its affiliated companies. Names of products, brands, etc., appearing in this manual are trademarks or registered trademarks of their respective owner companies.

## **Introduction**

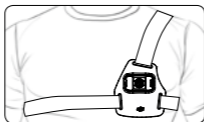
The OSMO™ Chest Strap Mount allows you to mount the Osmo on your chest so you can shoot hands free.

## Usage

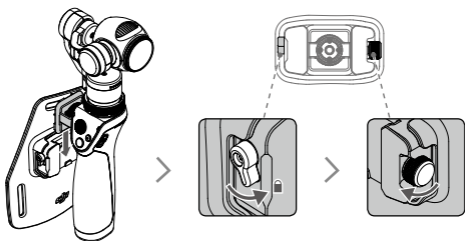
1. Attach the quick-release mount onto the Osmo and tighten.



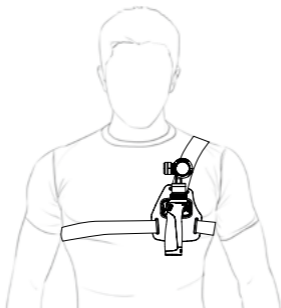
2. Wear the strap as show below. Make the strap as tight as possible to prevent vibration reaching the Osmo.



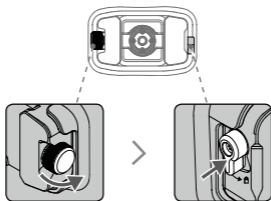
3. Attach the Osmo to the strap mount, then toggle the lock button to its lock position and tighten the knob on the other side.



Ensure the Osmo is mounted securely.



To remove the Osmo, loosen the knob and toggle the lock button to its unlock position, then remove the Osmo while pressing down the lock button.



CE RoHS



The content in this document is subject to change.

Download the latest version from

**[www.dji.com/product/osmo](http://www.dji.com/product/osmo)**

If you have any questions about this document, please contact DJI by sending a message to **[DocSupport@dji.com](mailto:DocSupport@dji.com)**.

OSMO™ is a trademark of DJI.

Copyright © 2016 DJI All Rights Reserved.